



G003169

# Conventional Optical Smoke/Heat Detector

## **Salwico EC-PH/A1R**

### **58°C**

Part no. 5200176-00A

System: ServoFighter, Salwico Cargo

### General Description

The EC-PH/A1R multi-criteria detector belongs to EC range of detectors. Salwico EC is a range of conventional detectors, which have been produced using the latest in manufacturing technology and supplied with an array of advanced features, making them 'better by design'.

The EC-PH/A1R multi-criteria detector uses a state of the art optical chamber and a thermal element combined with a microprocessor, running sophisticated algorithms to provide quick and accurate detection of fires. The combination of photoelectric and thermal characteristics provides a faster response to 'real fire' situations, while at the same time reducing the risk of unwanted environmentally generated alarms.

#### Features

- Low profile design
- Low current draw
- Automatic drift compensation
- Remote alarm test feature
- Easy Maintenance
- Range of detector bases available
- Remote LED Option
- Approved to EN54 – 7:2000 (Amendment 1)
- EN54 – 5:2000 (Amendment 1) Class A1R; CEA 4021

### Data

#### Electrical Specifications

Operating Voltage Range	8 to 30VDC (Nominal 12/24VDC)
Maximum Standby Current at 25°C	75µA at 24VDC

#### Electrical Specifications

Maximum Permissible Alarm Current	80mA (current limited by control panel)
Alarm Current at 24VDC	Max 33mA (with EC-BASE or EC-ADAPT)

#### Environmental Specifications

Application Temperature Range	-30°C to +70°C
Humidity	5% to 95% Relative Humidity (non-condensing)

#### Mechanical Information

Height	40.5mm (plus 9.5mm for standard base, 21mm for deep base)
Diameter	102mm
Weight	78g (plus 45g for standard base)
Wire Gauge for Terminals	0.4mm <sup>2</sup> to 2.0mm <sup>2</sup>
Colour	Approximates to RAL9016
Material	ABS
IP Rating	IP40/IP55 (Depending on base used)

#### Certificates

Certified according to

0832/yy  
yy = year of production

<b>CE</b>
Conventional Optical Smoke/Heat Detector
EN54-7 : 2000 + A1 EN54-5 : 2000 Class A1R + A1 5200176-00A EC-PH-A1R 0832-CPD-1554 11
Pittway Tecnologica Srl, Via Caboto 19/3, 34147 TRIESTE, Italy

OEM Part no. 156-3766-000

**Detector Bases**

For Dry Spaces 5200177-00A EC-BASE  
 For Wet Spaces 46950 IP55 Base  
 5200178-00A EC-ADAPT IP55

**Installation**

1. Place the detector into the detector base and rotate clockwise with gentle pressure until the detector drops into place.
2. Continue rotating clockwise until the slot in the detector cover lines up with the lines moulded in the base.



**CAUTION!**

Dust covers must be removed first after Commissioning

3. After all detectors have been installed, apply power to the detector monitoring circuits.

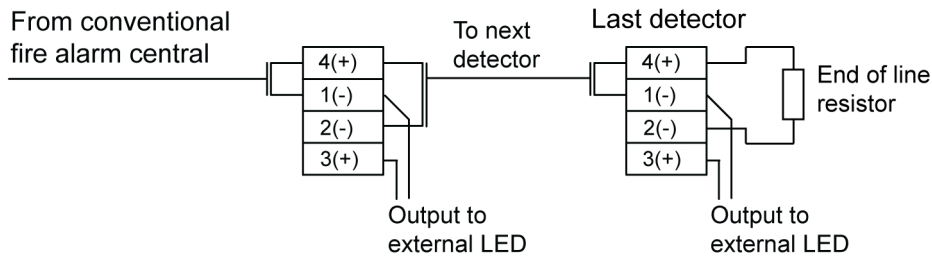


**NOTE!**

Dust covers must be removed before the system can be made operational.

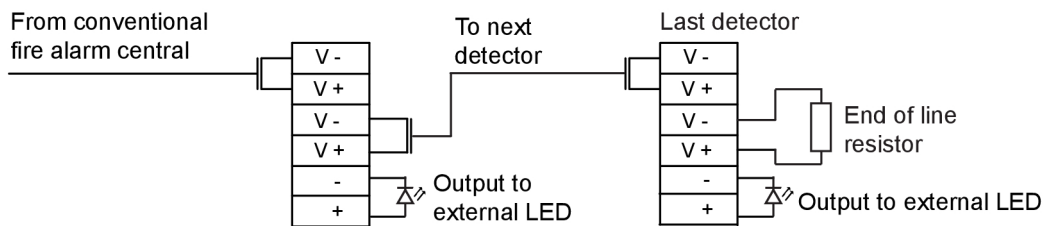
**Connection**

**Connection for EC-BASE**



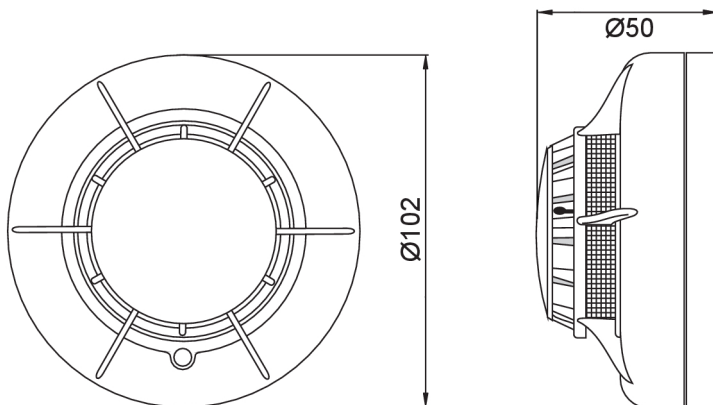
G003189

**Connection for EC-ADAPT**



G003545

**Dimensions (mm)**



G003193