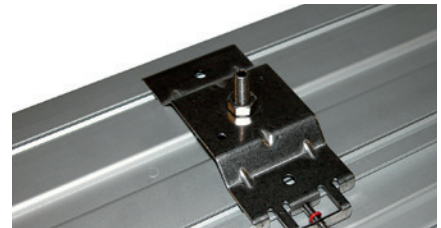
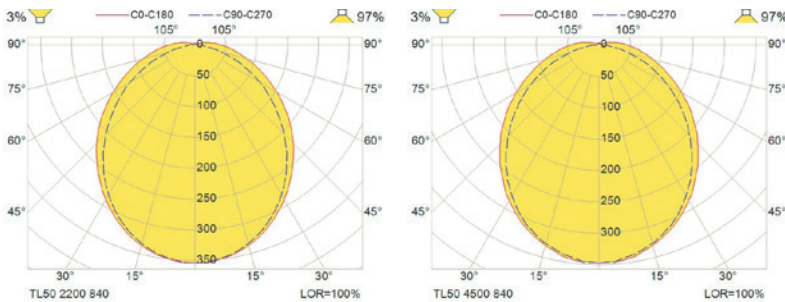


### TL50 TECHNICAL OUTDOOR LUMINAIRE LED

<b>Application</b>	Areas like car decks, open decks, engine rooms and other demanding application areas
<b>Protection degree</b>	IP67/67
<b>Housing</b>	Seawater resistant, galvanized aluminium housing
<b>Cable insert</b>	2 x M25 x 1.5 polyamide D7-17mm
<b>Light source</b>	LED 2 x 5W / 2 x 10W / 2 x 20W
<b>Mounting</b>	Mounted to the ceiling or cable trays by: screws, different screwed or welded mounting brackets, shock mounts or triangles are available. Mounting distance adjustable.



AS mounting system

**PART NO.**

<a href="#">TL50124000</a>	2200lm 840 220-240V M25 GL
<a href="#">TL50124400</a>	2200lm 840 220-240V M25 AS
<a href="#">TL50624000</a>	4500lm 840 220-240V M25 GL
<a href="#">TL50624400</a>	4500lm 840 220-240V M25 AS
<a href="#">TL50126400</a>	2200lm 840 24V M25 AS

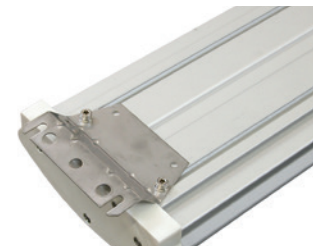
**WEIGHT**

4,3 kg
4,2 kg
6,5 kg
6,5 kg
6,5 kg

**Short version:**

<a href="#">TL50024000</a>	1000lm 840 220-240V M25 GL
<a href="#">TL50024400</a>	1000lm 840 220-240V M25 AS
<a href="#">TL50074000</a>	800lm 840 24V M25 GL
<a href="#">TL50074400</a>	800lm 840 24V M25 AS

2,1 kg
2,1 kg
2,1 kg
2,1 kg



GL mounting system

**Battery backup:**

<a href="#">TL50124200</a>	TL50 LED 2200 840 220-240 HFE3 1XM25 GL
<a href="#">TL50124600</a>	TL50 LED 2200 840 220-240 HFE3 1XM25 AS
<a href="#">TL50624200</a>	TL50 LED 4500 840 220-240 HFE3 1XM25 GL
<a href="#">TL50624600</a>	TL50 LED 4500 840 220-240 HFE3 1XM25 AS

2,1 kg
2,1 kg
2,1 kg
2,1 kg