

TX65 LED

Ex d LED area light



TX65 2 Modules
with pole mounted



TX65 1 Module with
pole mounted



TX65 2 Modules
with flat bracket



TX65 1 Module with
flat bracket

Description

The TX65 LED area lighting is designed for installation and use in Hazardous areas, Zones 1 and 2.

By using latest LED technology it offers a virtually maintenance-free solution for all high and medium intensity lighting requirements on low power consumption. Seawater resistant aluminium anodized module housing for excellent cooling. Stainless steel ceiling or pole mounting. The light offers 100 000 hours lifetime at an ambient temperature of 45°C.

The lights are IECEx, ATEX and TRCU certified.

TX65 LED

Ex d LED area light

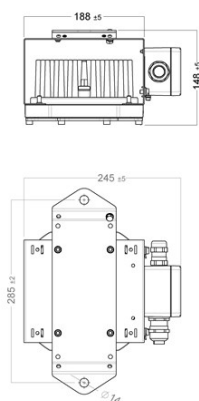


Technical description

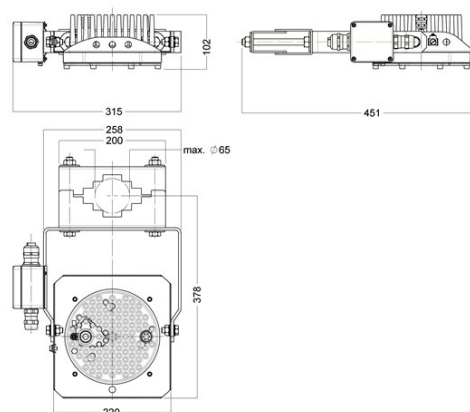
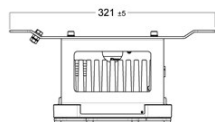
Light source	Array of LEDs with 3000, 4500 lm output per module in 3000K or 5000K light colour temperature and CRI>80.
Optic	One or two module versions with safety glass
Housing	Modules in die-casted, seawater resistant aluminium, designed for excellent heat management, frame and bracket stainless steel AISI 316L
Application	Hazardous areas zone 1 and 2 Due to the extreme wide light output this area light can be used in low base applications instead of fixtures with tubes
Design	According to rules of maritime classification societies and IEC standards

Approvals	ATEX and IECEx approved
Ambient temperature	Operation: - 50° C up to + 55° C Storage temperature: - 55° C up to + 80° C
Finish	Modules anodized
Mounting	Ceiling mounted or pole mounting (for diameters up to 65mm)
Connection	Ex e external connection box, terminal 6 mm ² 2 cable glands M25 Ex e brass nickel plated (others on request) standard for cable 10 to 17 mm

Measurement drawings



TX65 Ceiling mounting



TX65 Pole Mounting