

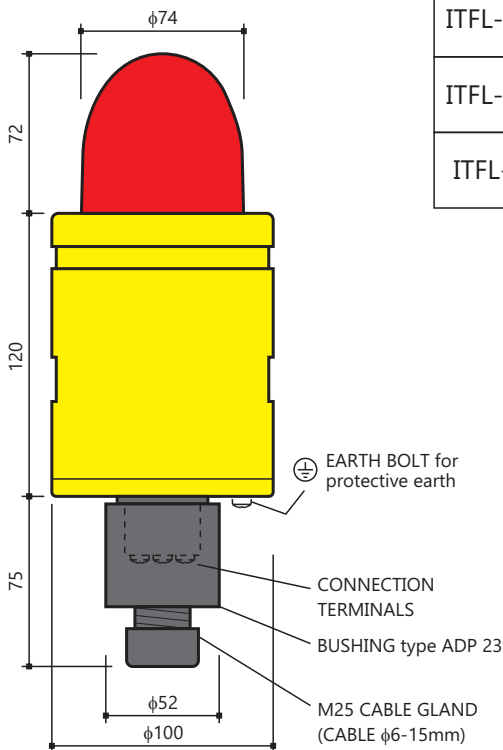
EX-PROOF FLASHING LIGHT ITFL-Ex

APPLICATION

INELTEH's flashing lights series ITFL-Ex, as the equipment for visual alarm indication are designed to work in potentially explosive atmospheres and harsh environment conditions. Because of sea-water resistant material and IP66 protection, they are also suitable for marine and offshore applications.

TECHNICAL DATA

- Flash energy: 6J; Approx. 60 flashes per min.
- IP protection: IP66
- Cable entry: Ex e / Ex d conductor bushing
- Ambient temperature: $T_{amb} = -20^{\circ}\text{C}$ to $+40^{\circ}\text{C}/+50^{\circ}\text{C}$ (for version with bushing)
- Code of Ex protection $\text{Ex II 2 G Ex db eb IIC T6...T3 Gb}$ (for version with bushing)



All dimensions are in mm.

Equipment type	Power supply	Consumption	Max. ambient temp.	Temp. class
ITFL-Ex-230-...	230V AC	0,22 A	40°C	T6
			50°C	T5
ITFL-Ex-115-...	115V AC	0,5 A	50°C	T5
ITFL-Ex-24-...	24V DC	0,4 A	40°C	T6
			50°C	T5

Connection (terminals inside the bushing):

ITFL-Ex-115-...
ITFL-Ex-230-...



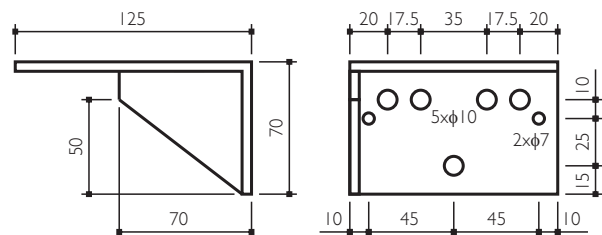
230 V AC
115 V AC

ITFL-Ex-24-...



24 V DC

Metal support (optional):



All dimensions are in mm.

Rev	Changes	Date/Sign	Based by-Project	Date	Sign	Title:		
1			Prepared	09.04.20.		EX PROOF FLASHING LIGHT type ITFL-Ex Front view/outlines		
2			Drawn	10.03.22.	Bettle			
3			Approved					
4								
5						Identity:	Ref.:	Rev. 0
This drawing is the property of INELTEH d.o.o. and must not be reproduced, copied or distributed, entirely or in part, without written permission of INELTEH d.o.o.			INELTEH RIJEKA - CROATIA			File:	Ex proof flashing light, ITFL-Ex-230.cdr	Page/of 2/4