

INTELEH SIGNAL COLUMNS

Signal columns are applied on board ships and with name in the engine room, where there are for various alarm signaling through visual and/or audible signals. The signal system from Inelteh has been developed with the idea of standardizing all alarm signaling within one common system.

The Inelteh signal columns can display any preferred symbol, including the most symbol symbols required by IMO regulations. All signal columns from Inelteh meet the requirements of the most important classification societies: IMO, ISO and SBG.



CHARACTERISTICS

- LED Light columns (semaphores) designed for engine room spaces
- Up to 12 symbols
- With or without flashing lights
- With or without sirens / loudspeakers
- Power supply 230VAC, 110VAC or 24VDC
- Protection IP54
- Bulkhead mounting
- Wide range of two-inputs programmable sirens series ITES (for detailed information see separate leaflet)
- Power indicator
- Lamp test button (or lamp test / DMA reset push button, on request)

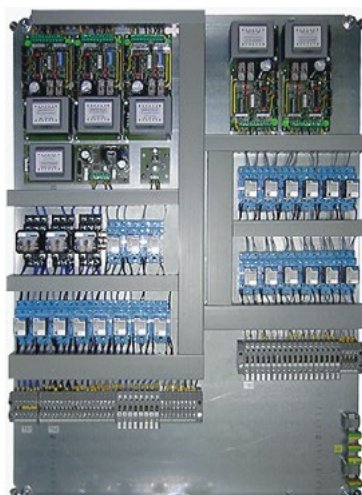
CONTROL UNIT ITCU

Het verwerken van de binnenkomende en uitgaande signalen. de

- Double supply possibility (main and emergency) with automatic change-over
- Comprise electronic units of sirens (if exist)
- Bulkhead mounting or mounting within console

INPUTS

- General Alarm
- Fire Alarm
- CO2 release alarm of FOAM
- Machinery alarm
- DMA
- Telephone call alarm
- Telegraph alarm
- Bilge alarm



OUTPUTS

- naar signaalkolommen
- naar flitslichten
- naar sirenes

AUDIO SIGNALIZATION

Programmable electronic multitone sirens **ITES**

A wide range of two-inputs programmable sirens



Electronic multitone sirens **ITES-M**

32 different tones with one input



SIGNALLING UNITS

- Various signalling units for different alarm purposes
- Different visual and audio alarms to suit your needs



EX SINGALING COLUMNS

The range of signaling columns also include versions for EX zones. For the EX columns, different symbols, sirens and/or flashing lights can be chosen



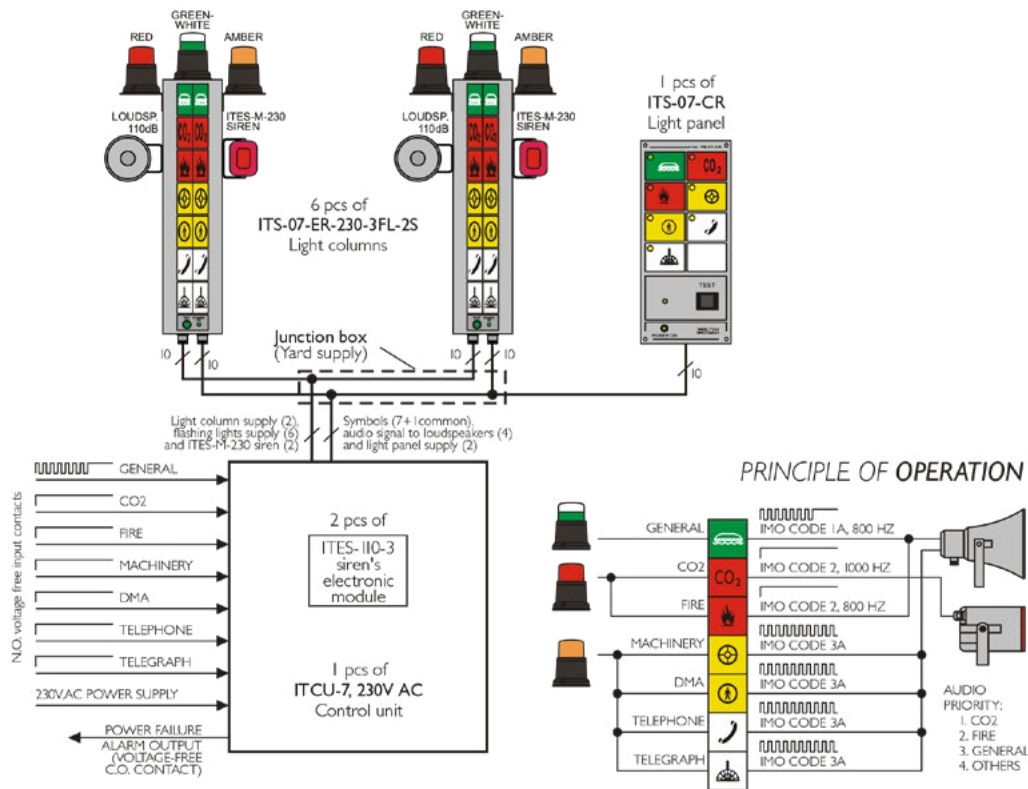
- ITES-110Ex or ITES-115Ex sirens loudspeakers
- Ex-proof flashing lights
- Ex-proof light symbols
- Ex-proof connection boxes

EX-PROOF FLASHING LIGHT

- Type: 6161 or CWB-ATEX or XB9
- Explosion protection: EEx de IIC T5/T6 (EEx d IIC T5/T6 for XB9)
- Power supply: 230V,AC
- Consumption: 80mA (60mA for XB9)
- Flashing power 5J
- Primary fuse 0.20AT
- Protection IP 66
- Weight approx.1.6 kg
- Colors: red, amber, blue, green



ENGINE ROOM ALARM INDICATIE SYSTEM EXAMPLE SCHEDULE



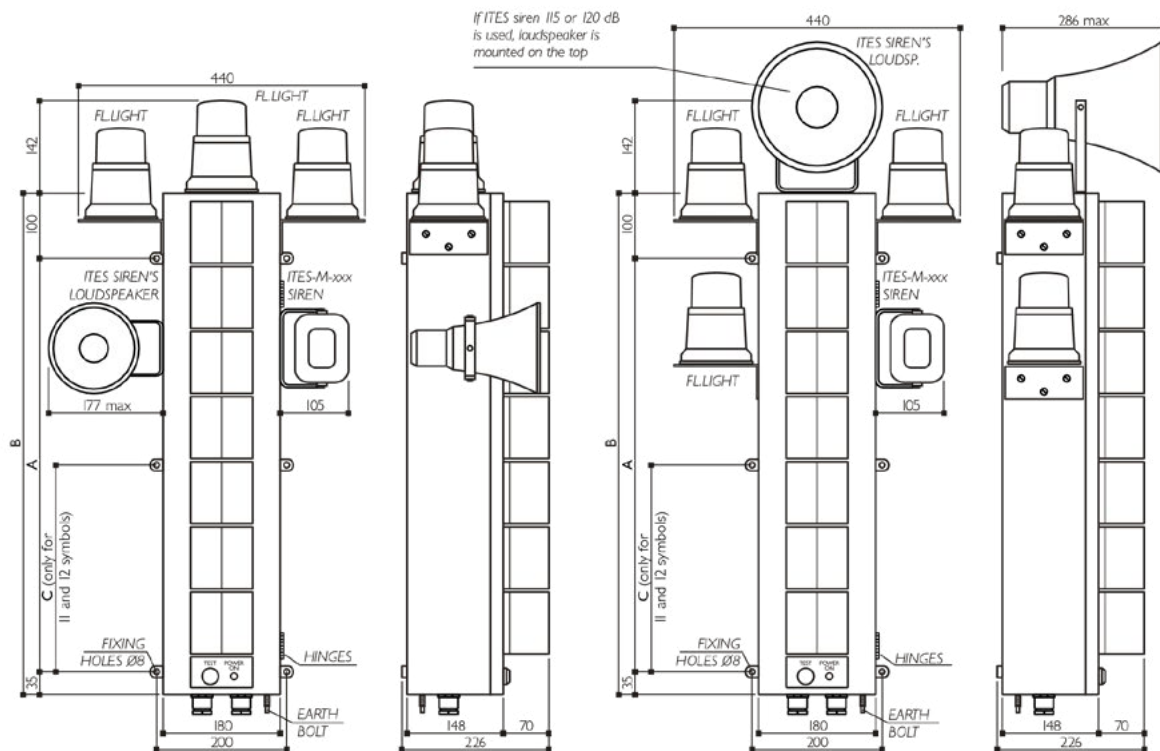
The columns can be provided with alerts such as flashlights and sirens. The columns can be supplied with a 24V, 110V or 230V supply voltage. Due to the modular structure, the columns are fully configurable as required and can be produced from 2 to 12 symbols per column.

STANDARD FLASHING LIGHT ITFL

- Power supply / consumption: 12VDC / 0.8A; 24VDC / 0.5A; 110VAC / 0.2A; 230VAC / 0.1A
- Approx. 60 flashes per minute
- Temperature range -20°C/+55°C
- Flashing energy 6J
- IP protection IP 54
- Weight approx. 0.27 kg
- Colours: red, amber, blue, green, white, green-white
- Steel support can be delivered (on request)



DIMENSIONS



No. of symbols	A (mm)	B (mm)	C (mm)
3	335	470	-
4	335	470	-
5	535	670	-
6	535	670	-
7	635	770	-
8	735	870	-
9	835	970	-
10	935	1070	-
11	1035	1170	517,5
12	1135	1270	567,5

SPECIFIC WHISHES?

Upon request, there are also options for customizing the columns or individual parts.
For more info, contact Marcel Teuwsen via m.teuwsen@tttbv.com or +31 (0) 24 366 7477.