

MARITIME & ENERGY

PRODUCT CATALOG

PHONTECH
by ZENITEL GROUP





PHONTECH

by ZENITEL GROUP

Phontech was established in 1987. On the 1st of November 2018 Zenitel reached an agreement to acquire the Phontech business from Jotron AS. Phontech specializes in Intercom and Public Address & General Alarm solutions for the global Maritime and Energy markets, with worldwide market presence.

Phontech products are ISO 9001 certified and approved by worldwide leading vessel classification societies. Zenitel is also Norwegian Petroleum Directorate approved and several of their products are designed according to NORSOK standard.

For sales or support, please contact us at
email: phontech@zenitel.com
Phone: +47 4000 2700

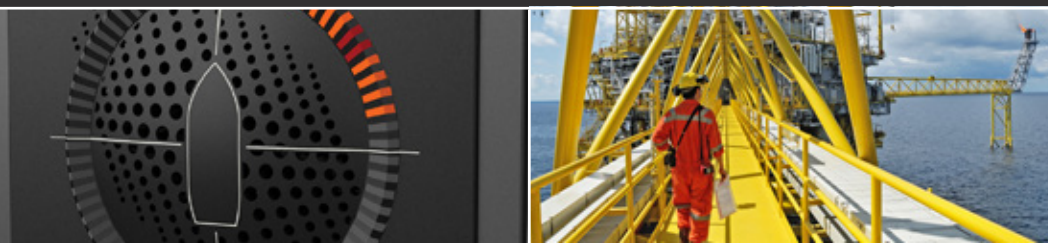
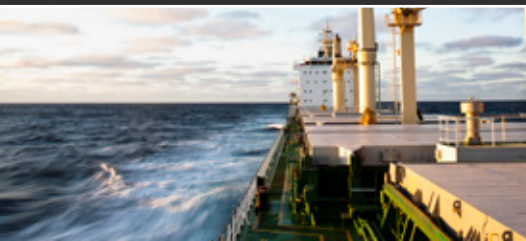


Table of Contents:

Sound Reception System - Phontech 8300 MkII	5
Command Intercom System - CIS 3000	7
Batteryless Telephone System - BTS 4000	15
Integrated Communications System - ICS 6200	21
Public Address and Alarm System - MPA 1600	33
Loudspeakers	38
Signal Equipment	44
Hospital & Refrigerator Alarm System	48



SOUND RECEPTION SYSTEM

Phontech 8300 MkII Sound Reception

The sound reception system Phontech 8300 MkII is designed to receive and detect foghorn sounds from other vessels. Phontech 8300 MkII is for use onboard one man operated closed bridge class ships.

OPTIONAL
SLAVE UNITS



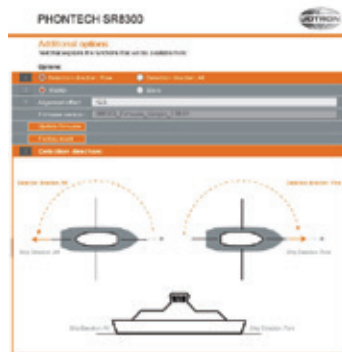
PHONTECH 8300 MkII
BRIDGE



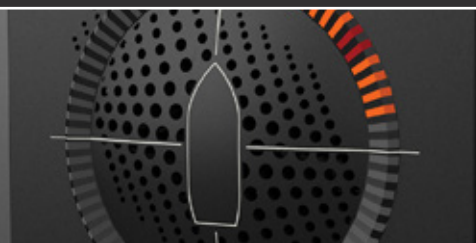
PHONTECH 8301 MkII
MAST TOP



- IEC61162-450
- FAULT REPORTING AND EVENT LOGGING
- VDR INTERFACE



WEB INTERFACE



TYPE ART NO. SOUND RECEPTION SYSTEM
PHONTECH 8300 MkII

19470 Phontech 8300 MkII Sound Reception System Complete

- Phontech 8300 MkII, display unit
- Phontech 8301 MkII, mic unit

8300 19490 Phontech 8300 MkII, display unit

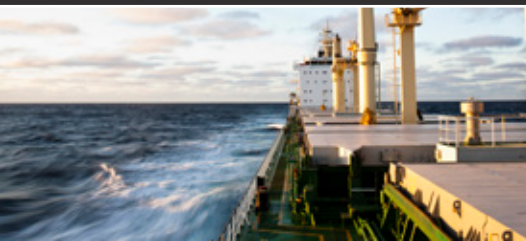


- Dimensions: 144x144x124 mm
- Weight: 0.85 kg
- IP 22
- Flush / Console (optional wall mounting box)
- Functionality according to ISO 14859
- Sound capacity: 70 – 2100 Hz
- Power 21 – 32V DC
- Power consumption 8W (max)

8301 19590 Phontech 8301 MkII, mic unit



- Dimensions: 317x338 mm
- Weight: 3.95 kgs
- IP 56
- Temperature: -25° to +55°C
- Vertical / Horizontal mounting
- Sound capacity: 70 – 2100 Hz
- Power (supplied from 8300 MkII, Display unit)

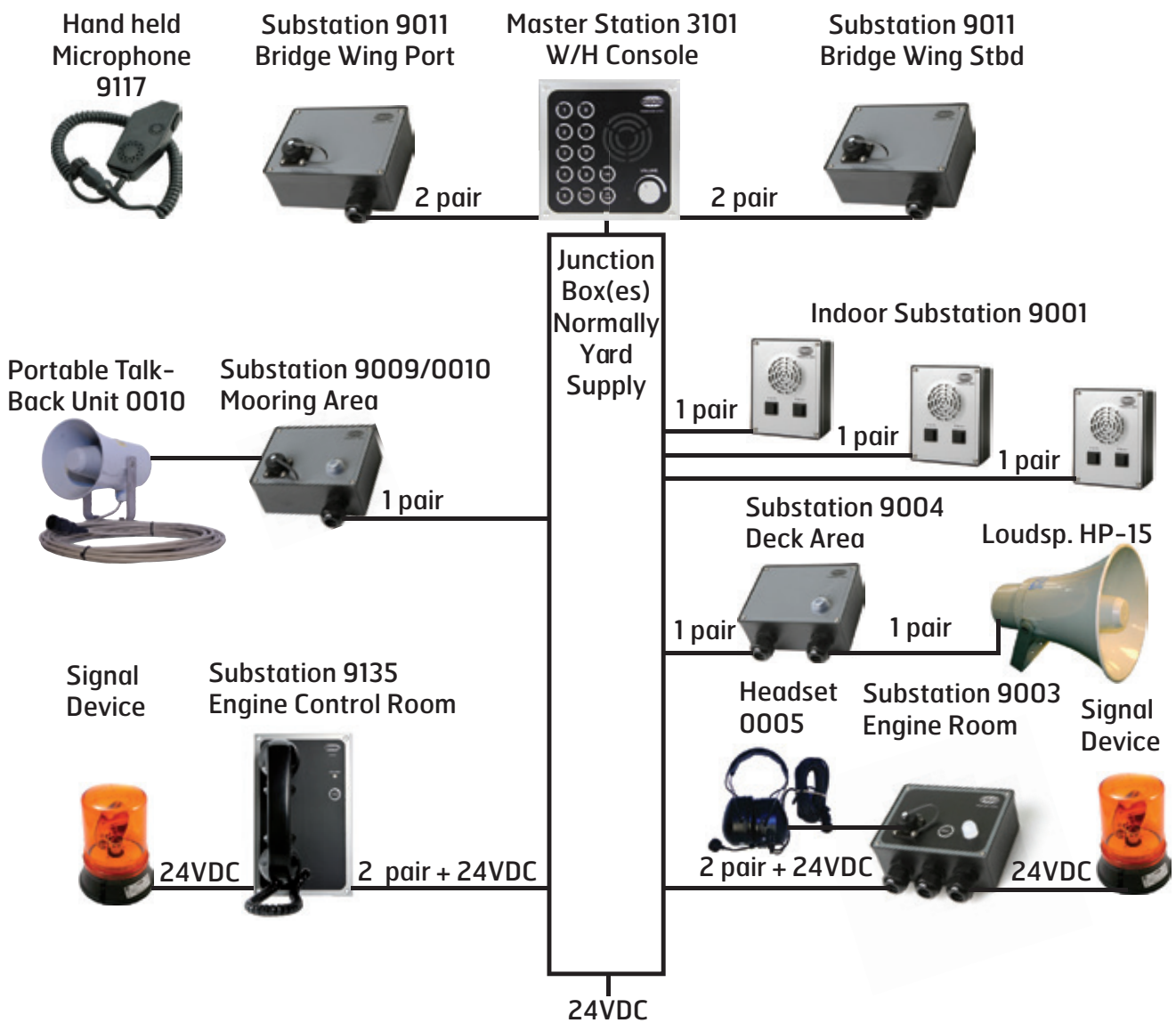


COMMAND INTERCOM SYSTEM

Phontech Command Intercom System: CIS 3000

The concept CIS 3000 consists of a line of different master stations; Type 3100 (5 ext.), type 3101 (10 ext.), type 102 (20 ext.), and the extended facility units 3130/3131/3132 (15 ext. + 4 remotes). In addition, the systems are completed

with various substations from the 9000-series. The compact design is made according to DIN 144 standard sizes, harmonizing with our other models for console mounting. All master stations have a black keypad with integrated operator switches, indicator LED's, loudspeaker, microphone and volume control. The operation is simplex, controlled by the master station with priority.



**TYPE ART NO. COMMAND INTERCOM SYSTEM
CIS 3000**

3100 16771 Master Station, 5 lines



- Flush or bulkhead mounting
- Integrated mic & loudspeaker
- Connection for goose neck / handmic
- Connection for extra loudspeaker
- Volume control in front
- Bridge wing extensions
- 24 vdc
- 12 w output
- Weight: 0.85 kgs
- Dimensions: 144x144x100 mm

3101 16774 Master Station, 10 lines



- Flush or bulkhead mounting
- Integrated mic & loudspeaker
- Connection for goose neck / handmic
- Connection for extra loudspeaker
- Volume control in front
- Bridge wing extensions
- 24 vdc
- 2 x 12 w output
- Weight: 0.9 kgs
- Dimensions: 144x144x100 mm

3102 16785 Master Station, 20 lines

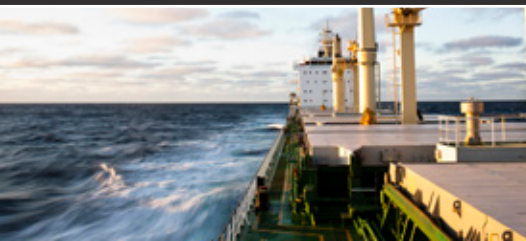


- Flush or bulkhead mounting
- Integrated mic & loudspeaker
- Connection for goose neck / handmic
- Connection for extra loudspeaker
- Volume control in front
- Bridge wing extensions
- 24 vdc
- 4 x 12 w output
- Weight: 1.15 kgs
- Dimensions: 144x192x100 mm

3130 16791 Master Station, 15 lines + 4 remote



- Flush or bulkhead mounting
- Integrated mic & loudspeaker
- Connection for goose neck / handmic
- Connection for extra loudspeaker
- Volume control in front
- Bridge wing extensions
- 24 vdc
- Total 30 w output
- Weight: 1.25 kgs
- Dimensions: 144x192x100mm



TYPE	ART NO.	COMMAND INTERCOM SYSTEM CIS 3000
------	---------	-------------------------------------

3131	16789	W.T. Remote Station, IP55, 15 lines + 4 remote
------	-------	--



- Flush or bulkhead mounting
- Integrated mic
- Connection for goose neck / handmic
- Connection for external loudspeaker
- 24 vdc
- Total 30 w output
- Weight: 0.75 kgs
- Dimensions: 150x200x78 mm

3132	16787	Remote Station, 15 lines + 4 remote
------	-------	-------------------------------------



- Flush or bulkhead mounting
- Integrated mic & loudspeaker
- Connection for goose neck / handmic
- Connection for external loudspeaker
- Volume control in front
- 24 vdc
- Total 30 w output
- Weight: 1.1 kgs
- Dimensions: 144x192x100 mm

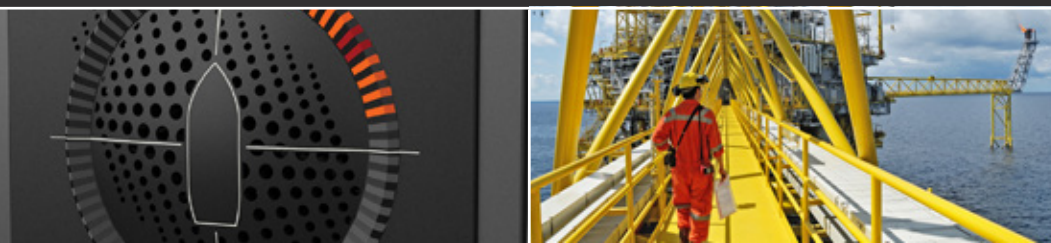
15062	Built-in PCB for 310x for max 8 sub stns. w/ext.sign.
-------	---



3133	16423	PA Interface for 3130, wall mounting
------	-------	--------------------------------------



- Weight: 2.0 kgs
- Dimensions: 302x209x159 mm



**TYPE ART NO. COMMAND INTERCOM SYSTEM
CIS 3000**

14256 Wall box for 3100/3101



- Weight: 0.65 kgs
- Dimensions: 200x148x100 mm

14258 Wall box for 3102/3130/3132



- Weight: 0.75 kgs
- Dimensions: 200x196x100 mm

17343 Goose neck microphone



- Length: 323 mm
- Weight: 0.25 kgs

14582 Set of spare parts for 31xx system

9001 17570 Indoor Unit, wall mounted



- For cabins & mess rooms
- 2 way speaker
- Calling signal & PTT
- Weight: 0.3 kgs
- Dimensions: 130x100x52 mm
- IP31

9135 16947 ECR Telephone, w/relay



- Call lamp
- Weight: 0.8 kgs
- Dimensions: 144x240x33 mm



TYPE	ART NO.	COMMAND INTERCOM SYSTEM CIS 3000
------	---------	-------------------------------------

9003	17572	Substation for headset
------	-------	------------------------



- W/relay Max 8A and lamp
- Weight: 0.3 kgs
- Dimensions: 100x130x52 mm
- IP-56

9004	17573	WP Call Unit
------	-------	--------------



- For connection to 2-way speaker
- Weight: 0.3 kgs
- Dimensions: 100x130x52 mm
- IP-56

0005	11249	Headset
------	-------	---------



- W/10m cable & plug
- Weight: 0.7 kgs
- Noise Cancelling Microphone

11220	Bracket for headset
-------	---------------------

0010	11252	Portable Talk-Back unit
------	-------	-------------------------



- W/10m cable & plug for 9009
- Weight: 1.9 kgs
- Dimensions: 139x197 mm

9009	17574	WP Call unit w/socket
------	-------	-----------------------

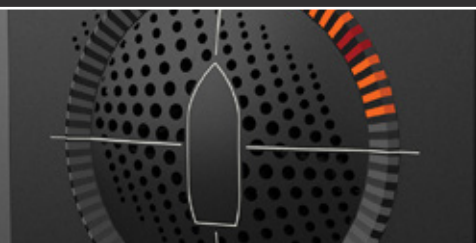


- Connector for 0010
- Weight: 0.3kgs
- Dimensions: 100x130x52 mm
- IP-56

9011	17575	Plugbox, weatherproof
------	-------	-----------------------



- Weight: 0.3 kgs
- Dimensions: 100x130x52 mm
- IP-56



**TYPE ART NO. COMMAND INTERCOM SYSTEM
CIS 3000**

0012 11254 Mic. station w/goose neck & ptt



- Console mounted
- Weight: 0.3 kgs
- Dimensions: 120x80x70 mm (+ mic.)

0013 11255 W.T. Bridge Wing unit



- W/mic. contact
- Loudspeaker connection
- Weight: 3.0 kgs
- Dimensions: 100x130x52 mm

9014 14823 Power Supply



- 220/110 vac – 24 vdc, 3A
- Weight: 0,9 kgs
- Dimensions: 210x160x102mm

9016 17576 WP Substation for Loudspeaker



- W/relay & headset connection
- Weight: 0,3 kgs
- Dimensions: 100x130x52 mm
- IP-56

9017 14197 Handmic w/cable and plug



- Indoor type
- Weight: 0.25 kgs



TYPE	ART NO.	COMMAND INTERCOM SYSTEM CIS 3000
------	---------	-------------------------------------

9117	14198	Handmic w/cable and plug
------	-------	--------------------------



- 2-ways for Bridge Wing,
- Splashproof
- Weight: 0.25 kgs

9018	14279	Indoor Bridge Wing Telephone
------	-------	------------------------------



- W/handset
- Weight: 1.5 kgs
- Dimensions: 210x96x147 mm

9217	14199	Handmic w/cable and plug
------	-------	--------------------------



- Waterproof
- Weight: 0.25 kgs

0019	11262	Line Amplifier
------	-------	----------------



- 25 watts
- 24 vdc
- Weight: 1.65 kgs
- Dimensions: 120x220x90 mm

9024	16134	Line Amplifier
------	-------	----------------

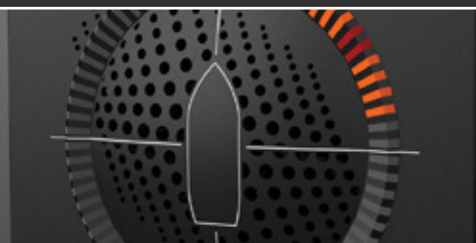


- 120 watts
- 220 vac /24 vdc
- Weight: 14.0 kgs
- Size: 19" 3U

9052	15898	Sub Station
------	-------	-------------



- 2 way speaker
- Weight: 0.6 kgs
- Dimensions: 130x100x52 mm
- Stainless steel AISI 316 front
- IP-55



**TYPE ART NO. COMMAND INTERCOM SYSTEM
CIS 3000**

16341 Console mounted connector for 9017/ 9117



15203 Extension cable for headset & handmic. 5 m

15204 Extension cable for headset & handmic. 10 m



GHG-411 11297 EX Calling Unit



- Weight: 0.4 kgs
- Dimensions: 240x154x68 mm
- IP-66

DSP-15EExeN 16707 Loudspeaker 15W, 20 ohm, Ex demIIB + H2 T6



- Weight: 2.0 kgs
- Dimensions: 144x207mm

0043 13172 Interface for 3 Ex Substations

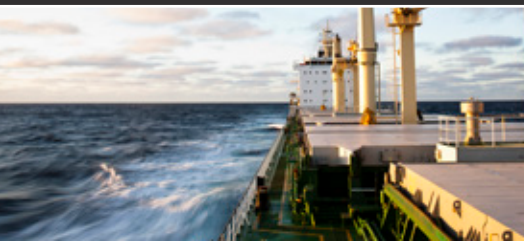


- Weight: 0.3 kgs
- Dimensions: 150x200x75 mm

9041 17577 Interface for 1 Ex Substation



- Weight: 0.3 kgs
- Dimensions: 100x130x52 mm
- IP-56



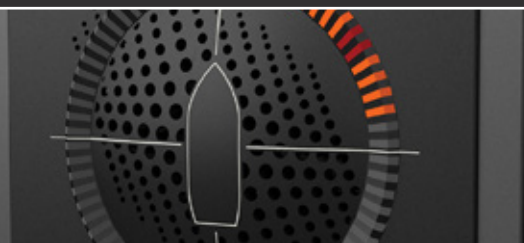
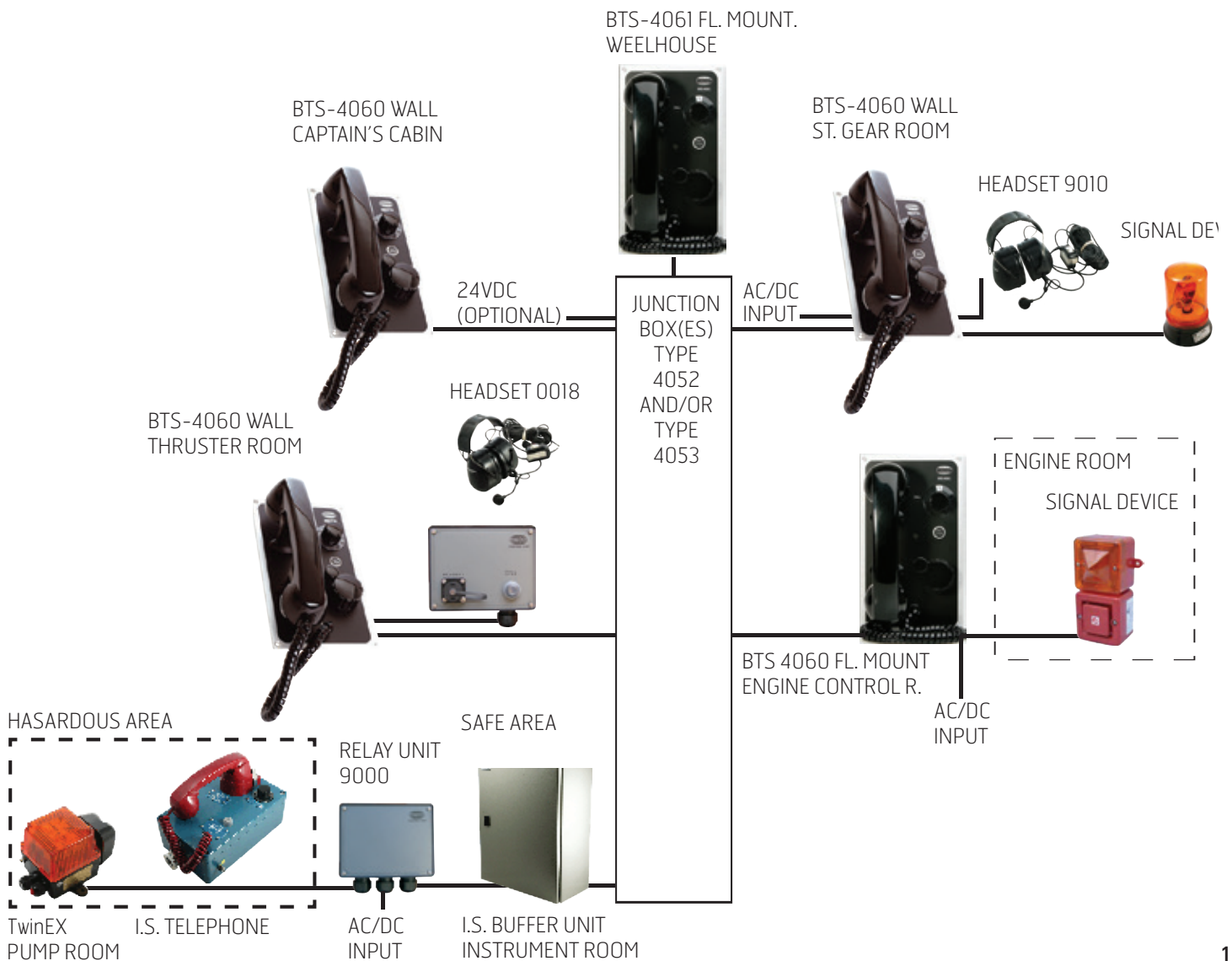
BATTERYLESS TELEPHONE SYSTEM

Phontech Batteryless Telephone System: BTS 4000

System BTS 4000 is an emergency telephone system without the requirement for any external power supply. All energy required for 4-6 minutes of continuous operation is produced by the call generator. The system is equipped with a sophisticated, extremely low power amplifier with high power and low distortion output. The amplifier is integrated in one of the telephone units to reduce the installation cabling. The system may also be connected

to 24VDC power supply to ensure continuous operation under normal conditions. The system automatically switches to batteryless and emergency operation in case of mains failure.

The system is based on three types of units; 4050 – single line (direct call), 4060 -12 lines version and 4040 -24 lines version. Any configuration needs one master telephone with a built-in amplifier, either 4051 –single line or 4061 – 12 lines version. For 24 lines version a separate speech amplifier type 4000 is needed.



**TYPE ART NO. BATTERYLESS TELEPHONE SYSTEM
BTS 4000**

4000 11289 Speech Amplifier Unit



- Max 24 lines
- Weight: 0.7 kgs
- Dimensions: 180x150x75 mm

4004 12070 I.S. Buffer Unit



- 4 Lines, expandable to 12
- Wall mounted
- 24vdc
- Weight: 13.4 kgs
- Dimensions: 400x500x210 mm

16301 I.S. Barrier for 2 extra lines



- I.S. Barrier

4005 12091 I.S Telephone



- Wall mounted
- Weight: 3.3 kgs
- Dimensions: 160x260x180 mm

4005 16386 I.S Telephone

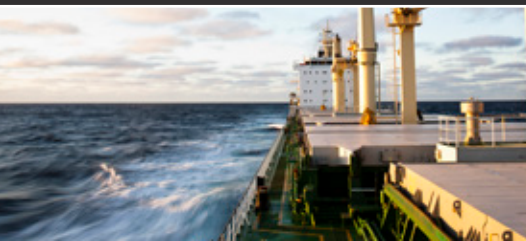


- w/ buzzer
- Wall mounted
- Weight: 3.3 kgs
- Dimensions: 160x260x180 mm

4015 12553 I.S. Buffer Unit



- 16 lines, expandable up to 24
- Wall mounted
- 24vdc
- Weight: 23.7 kgs
- Dimensions: 600x600x210 mm



TYPE	ART NO.	BATTERYLESS TELEPHONE SYSTEM BTS 4000
------	---------	--

4016	12554	I.S Telephone
------	-------	---------------



- 24 lines
- Wall mounted
- Weight: 4.0 kgs
- Dimensions: 160x260x180 mm

4016B	16744	I.S Telephone w/buzzer
-------	-------	------------------------



- 24 lines
- Wall mounted
- Weight: 4.0 kgs
- Dimensions: 160x260x180 mm

4012	13355	WT Portable Cabinet for Telephone
------	-------	-----------------------------------



- Weight: 7.85 kgs
- Dimensions: 300x400x210 mm

4013	13356	WT Plugbox for 4012
------	-------	---------------------



- Weight: 1.6 kgs
- Dimensions: 180x180x90 mm

4014	12534	Weatherproof wall cabinet w/buzzer
------	-------	------------------------------------



- Weight: 5.5 kgs
- Dimensions: 480x320x200 mm
- IP-56

4040	16854	Telephone Unit
------	-------	----------------

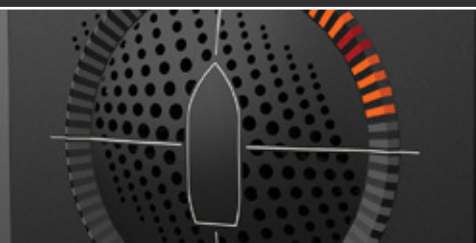


- 24 lines
- Without amplifier
- Must be used w/4000 amplifier unit
- Console mounted
- Weight: 1.15 kgs
- Dimensions: 144x240x155 mm

315213	Wallbox for 4040/50/51/60/61
--------	------------------------------



- Weight: 1.05 kgs
- Dimensions: 240x154x88 mm



**TYPE ART NO. BATTERYLESS TELEPHONE SYSTEM
BTS 4000**

4050 16782 Telephone Unit



- 1 line
- Without amplifier
- Console mounting
- Weight: 1.15 kgs
- Dimensions: 144x240x155 mm

4051 16781 Telephone Unit



- 1 line
- With amplifier
- Console mounting
- Weight: 1.15 kgs
- Dimensions: 144x240x155 mm

4060 16780 Telephone Unit



- 12 line
- Without amplifier
- Console mounting
- Weight: 1.15 kgs
- Dimensions: 144x240x155 mm

4061 16776 Telephone Unit



- 12 line
- With amplifier
- Console mounting
- Weight: 1.15 kgs
- Dimensions: 144x240x155 mm

9026 17160 Dimmer Module

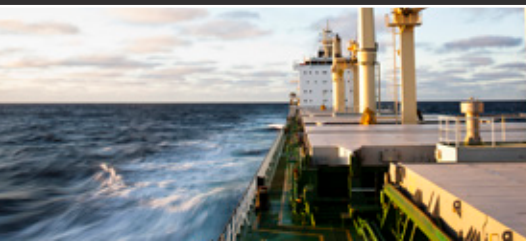


- Weight : 0.25kgs
- Dimensions: 48x144x35mm

16035 Table Console for 4040/50/51/60/61



- Weight: 0.85 kgs
- Dimensions: 280x180x130 mm



TYPE	ART NO.	BATTERYLESS TELEPHONE SYSTEM BTS 4000
------	---------	--

11619	Set of Spare Parts for 4000 system
-------	------------------------------------

9000	17569	Relay Unit
------	-------	------------



- For external signal
- Weight: 0.3 kgs
- Dimensions: 130x100x52 mm
- IP-56

9011	17575	WT Plugbox for headset
------	-------	------------------------



- Weight: 0.40 kgs
- Dimensions: 130x100x52 mm
- IP-56

0018	11288	Headset
------	-------	---------



- W/10m cable & plug
- Weight: 0.8 kgs
- Noise Cancelling Microphone

9010	15353	Headset
------	-------	---------

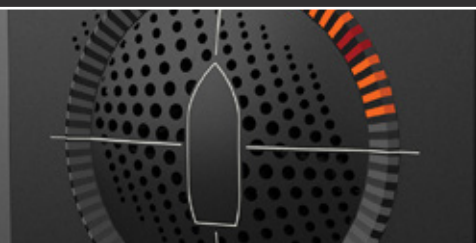


- W/10m cable
- Fixed connected
- Weight: 0.8 kgs
- Noise cancelling microphone

0032A 15494	I.S. EX Headset
-------------	-----------------



- Fixed to 4005 telephone
- Weight: 0.8 kgs
 - Noise cancelling microphone



**TYPE ART NO. BATTERYLESS TELEPHONE SYSTEM
BTS 4000**

4018 17567 Plugbox for headset



- W/off button
- Weight: 0.3 kgs
- Dimensions: 130x100x52 mm
- IP-56

15056 Plug-in Relay for external signal



- For 4040/50/51/60/61 telephones

4052 15154 Junction Box



- Max. 4 telephones
- Weight: 1.5 kgs
- Dimensions: 160x160x90 mm

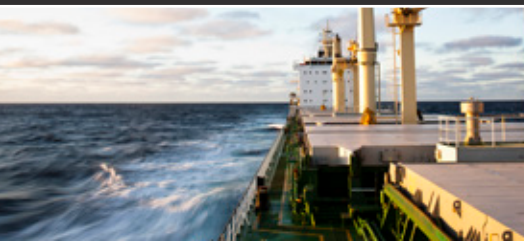
4053 15155 Junction Box



- Max. 12 telephones
- Weight: 2.8 kgs
- Dimensions: 340x160x90 mm

15203 Extension cable for headset and handmic, 5 m

15204 Extension cable for headset and handmic, 10 m



INTEGRATED COMMUNICATION SYSTEM

Phontech Integrated Communication System: ICS 6200

The ICS 6200 Integrated Communication System is a digital communication system meeting all aspects of internal and

external communication, information exchange onboard vessels, offshore installations and to/from onshore operation centres.



OFFICER CABINS / OFFICES
6210 TELEPHONE, DESKTOP / WALL, UpN, IP22
7210 TELEPHONE, DESKTOP / WALL, VoIP, IP22



CABINS / ACCOMMODATION
GIGASET DA-710



ENGINE ROOM
6211 TELEPHONE, INDUSTRIAL, UpN, IP56
7211 TELEPHONE, INDUSTRIAL VoIP, IP56



ADDITIONAL FEATURES:

- MPA OPTION
- VARIOUS LOUDSPEAKERS

ADDITIONAL FEATURES:

- IP CAMERAS
- IP BRIDGES
- SATCOM INTERFACE
- CELL PHONE INTERFACE



INSTRUMENT ROOM
9U PHONTECH SYSTEM CABINET

WORKSHOP
6212 TELEPHONE, INDUSTRIAL, WITHOUT HANDSET, UPN, IP56
7212 TELEPHONE, INDUSTRIAL, WITHOUT HANDSET, VOIP, IP56

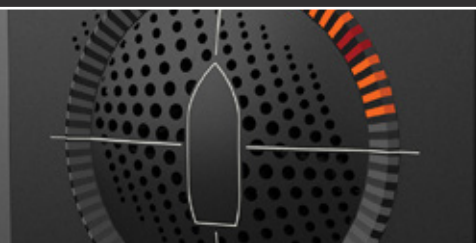


ENGINE ROOM
HEADSET FOR 6212 AND 7212



BRIDGE / ENGINE CONTROL ROOM
6223 TELEPHONE, CONSOLE, UpN, IP22
7223 TELEPHONE, CONSOLE, VoIP, IP22

BRIDGE / ENGINE CONTROL ROOM
6216 EMERGENCY PA UNIT



**TYPE ART NO. INTEGRATED COMMUNICATION SYSTEM
ICS 6200**

Compact ICS



- Dimensions: 618x585x470 mm
- Weight: 30 kgs + equipment
- IP 22
- Capacity: 72 lines or 24 Lines + 24 VoIP
- Dual power supply: AC/DC or AC/AC

1671 19611 Amplifier



- Dimensions: 19" 1U
- Weight: 5.5 kgs
- Output power: 250W / 100V line
- Frequency response: 200Hz – 15kHz (3dB)
- Input sensitivity: 0dBu
- Power: 2 x 110/230VAC + 1x 24VDC
- Power dissipation: 300W (max)

18934 9U Phontech system cabinet



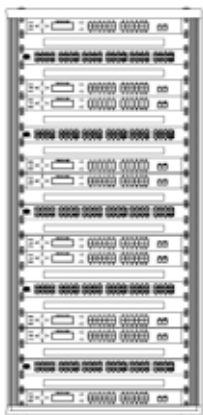
- Dimensions: 456x553x600 mm
- Weight: 50 kgs + equipment
- IP-20

18935 16U Phontech system cabinet

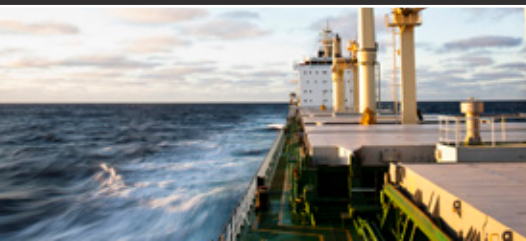


- Dimensions: 767x553x600 mm
- Weight: 75 kgs + equipment

18936 25U Phontech system cabinet



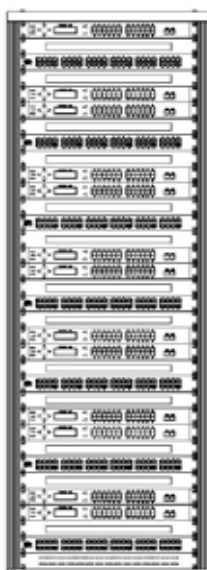
- Dimensions: 1167x553x600 mm
- Weight: 100 kgs + equipment



TYPE	ART NO.	INTEGRATED COMMUNICATION SYSTEM ICS 6200
------	---------	---

18937

34U Phontech system cabinet



- Dimensions: 1567x553x600 mm
- Weight: 120 kgs + equipment

17923

6200 Central unit



- 24 lines
- 48 VoIP registrations
- Weight: 3.5 kgs
- Size: 19" 1U
- Power: 220/110VAC/48/24VDC
- Power dissipation: 60W

18498

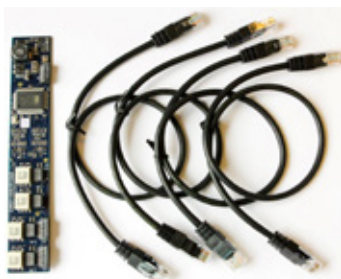
6200 FXS line board kit



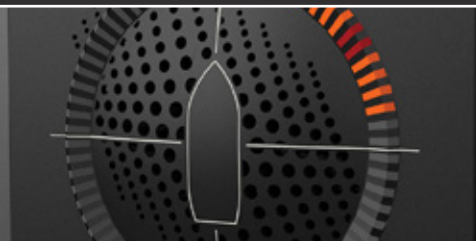
- 4 FXS analogue lines

18499

6200 UpN line board kit

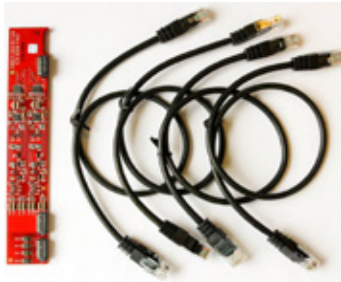


- 4 UpN digital lines



**TYPE ART NO. INTEGRATED COMMUNICATION SYSTEM
ICS 6200**

18500 6200 FXO line board kit



- 4 analogue FXO trunk lines

18501 6200 E & M line board kit



- 2 lines Input/Output E&M (4 wire)

18138 PoE switch Cisco



- 24 ports
- Size: 19" 1U
- Weight: 5.0 kgs
- Power: 220/110VAC
- Power dissipation: 220W

82999 Phontech 7200, 24 PoE Eth. GBit Switch AC/DC



- Size: 19" 1U
- Weight: 3.9 kgs
- Power: Duplicated - 110/230VAC + 24DVC
- Power dissipation: 225W (max)
- 24 Gbit PoE ports
- 2 SFP Gigabit (optional)
- Fully managed
- IEC 60945/DNV approved

86752 Phontech 7200, 24 PoE Eth. GBit Switch AC/DC



- Size: 19" 1U
- Weight: 3.9 kgs
- Power: Duplicated - 2x110/230VAC
- Power Dissipation: 225W (max)
- 24 Gbit PoE ports
- 2 SFP Gigabit (optional)
- Fully managed
- IEC 60945/DNV approved



TYPE	ART NO.	INTEGRATED COMMUNICATION SYSTEM ICS 6200
------	---------	---

18364	ICS 6205
-------	----------



- RJ45 to DICS D-Sub patch panel (TP Ships cable)
- Weight: 1.0 kgs
- Size: 19" 1U

18140	50 port telecom cat 3 patch panel
-------	-----------------------------------



18140	50 port telecom cat 3 patch panel
-------	-----------------------------------

- 50 (48)
- Weight: 2.0 kgs
- Size 19" 1U

18142	Cat6 keystone UTP patch panel
-------	-------------------------------



18142	Cat6 keystone UTP patch panel
-------	-------------------------------

- 24 port
- Weight: 0.5 kg
- Size: 19" 1U

18141	Cat5e UTP patch panel
-------	-----------------------



18141	Cat5e UTP patch panel
-------	-----------------------

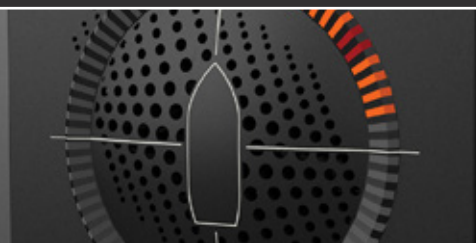
- Ports: 24
- Weight: 0.5 kgs
- Size 19" 1U

18526	8L Termination module kit for 6205
-------	------------------------------------



18526	8L Termination module kit for 6205
-------	------------------------------------

- 1 meter



**TYPE ART NO. INTEGRATED COMMUNICATION SYSTEM
ICS 6200**

18856 6200, ICS, spare parts kit

IMAGE
NOT
AVAILABLE

- ICS 6200 Fan assembly
- BRD 09601-006 R1222
- Open frame AC/DC 24V power supply 65W
- 6200 FXS line board
- 6200 FXO line board
- 6200 UpN line board

18518 VoIP Licence 10-pack, ICS 6200

IMAGE
NOT
AVAILABLE

VoIP

17965 Snom 710 IP telephone



- Four-line display, BW, 128 x 48 pixels
- 4 identities (lines)
- 4 context sensitive function keys
- 5 freely programmable function keys with LEDs
- Wideband HD audio
- Speakerphone
- Headset connection
- Power over Ethernet (PoE) / optional external power
- Ethernet switch
- XML Minibrowser
- Weight: 0.5 kgs

19064 Wall contact Cat.5

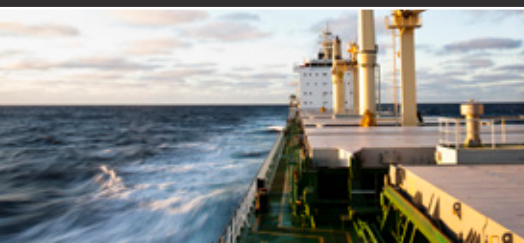


- Weight: 0.1 kg

18540 Ferntel IP, VoIP industry telephone IP65



- Display (128x64 pxl)
- 10/100 Mbps switch (IEEE802.3)
- 6 sip identities (lines)
- Power over Ethernet
- Housing: Polycarbonate
- Protection: IP65
- Dimensions: 293x191x128 mm
- Weight: 2.3 kgs



TYPE	ART NO.	INTEGRATED COMMUNICATION SYSTEM ICS 6200
------	---------	---

18752	IP 4 FEP Teleph.LCD Display Black – Flush mounted
-------	---



- Four-line display
- 10/100 Mbps switch (IEEE802.3)
- Power over Ethernet
- Dimensions: 280x190x60 mm
- Weight: 0.8 kgs

18522	Ex ResistTel IP2, VoIP teleph/relay, IP66
-------	---



- Display (182x64 pxl)
- 10/100 Mbps switch (IEEE802.3)
- 6 sip identities (lines)
- Power over Ethernet / external supply
- Ex. Protection: II 2G Exe ib [ib] mb IIC T4 Gb
- Protection: IP66
- Temp range: -40 to +60°C
- Dimensions: 293x227x135 mm
- Weight: 5.0 kgs

18480	Ex headset for ExResistTel
-------	----------------------------

IMAGE
NOT
AVAILABLE

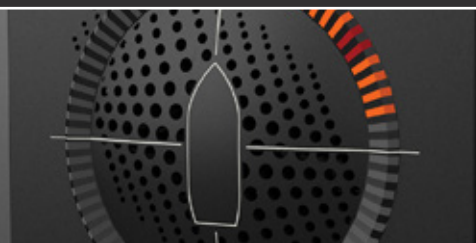
- Cable 14 m
- Ex. Protection: Ex ib IIB T4 Gb
- Temp range: -20 to +60°C
- Weight: 0.8 kgs

Digital

6110 MkII	18933	Indoor Unit, table or wall w/wall contact
-----------	-------	---



- Loudspeaking / handset operation
- Memory buttons
- Weight: 0.9 kgs
- Dimensions: 175x230x80 mm



**TYPE ART NO. INTEGRATED COMMUNICATION SYSTEM
ICS 6200**

RJ11 15533 Wall Contact 6P/4C



- Weight: 0.05 kgs
- Dimensions: 58x52x26 mm

RJ11 19049 Wall Contact



- Weight: 0.1 kgs

6111 17652 W.P unit w/handset, relay for external signal



- Loudspeaker connection
- Loudspeaking / handset operation
 - Memory buttons
 - Built in relay, max 5A
 - Weight: 2.0 kgs
 - Dimensions: 150x200x154 mm
 - IP-56

6112 16935 W.P unit without handset

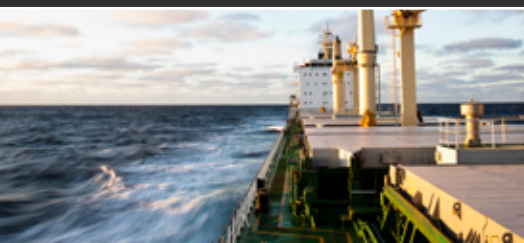


- Relay for external signal and loudspeaker connection
- Headset connection
 - Built in relay, max 5A
 - Weight: 1.0 kgs
 - Dimensions: 150x200x154 mm
 - IP-56

6113 16926 Flush m. unit w/handset



- Relay for external signal and loudspeaker conn.
- Loudspeaking / handset operation
 - Memory buttons
 - Built in relay, max 5A
 - Weight: 1.2 kgs
 - Dimensions: 192x240x126 mm



TYPE	ART NO.	INTEGRATED COMMUNICATION SYSTEM ICS 6200
------	---------	---

6123	16917	Flush m. unit w/handset
------	-------	-------------------------



- Relay for external signal and loudspeaker conn. Light & Dimmer
- Loudspeaking / handset operation
 - Memory buttons
 - Built in relay, max 5A
 - Weight: 1.2 kgs
 - Dimensions: 192x240x126 mm

6114	16940	Portable W.P. unit w/5 m cable and plug
------	-------	---



- Weight: 1.5 kgs
- Dimensions: 125x236x42 mm
- IP-56

9011	17575	Plugbox, W.P. for 6114 & 6122
------	-------	-------------------------------



- Weight: 0.3 kgs
- Dimensions: 130x100x52 mm
- IP-56

6124	16941	W.P unit, wall m.
------	-------	-------------------



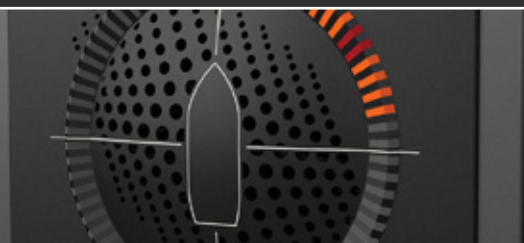
- Weight: 1.5,kgs
- Dimensions: 150x236x44 mm
- IP-56

6035	14774	Headset w/10 m cable & hook switch for 6112
------	-------	---

6035	17147	Headset w/15 m cable & hook switch for 6112
------	-------	---



- Weight: 0.8 kgs
- Noise cancelling microphone



TYPE

ART NO.

INTEGRATED COMMUNICATION SYSTEM
ICS 6200

PLM32

15125

W.P. Cabinet for 6112



- Weight: 1.5 kgs
- Dimensions: 200 x 300 x 150 mm

PLM43

12513

W.P. Cabinet for 6111, 6112 & Headset 6035



- Weight: 5.7 kgs
- Dimensions: 330 x 430 x 208 mm

Analog

19031

GIGASET DA-710



- Handsfree corded phone with phonebook for home and office use
- 100 phonebook entries
- Hinged alphanumeric display
- Caller identification
- 8 direct dialing keys with 2 layers
- Dimensions: 202 x 221 x 62 mm
- Weight: 0.56 kgs

RJ11

15533

Wall Contact 6P/4C



- Weight: 0.05 kgs
- Dimensions: 58x52x26 mm

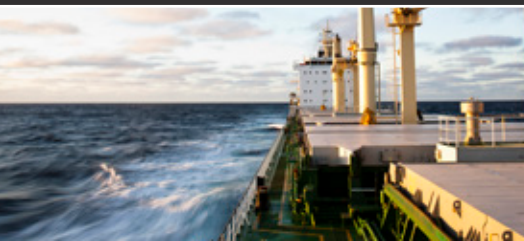
RJ11

19049

Wall Contact



- Weight: 0.1 kgs



TYPE	ART NO.	INTEGRATED COMMUNICATION SYSTEM ICS 6200
------	---------	---

5113	17151	Telephone, console mounted
------	-------	----------------------------



- DTMF analog telephone
- Loudspeaking / handset operation
- Memory Buttons
- Built In Relay, max 5A
- External loudspeaker connection
- Weight 1.2kgs
- Dimensions: 192x240x140 mm

5123	17150	Telephone, console mounted w/illumination & dimmer
------	-------	--



- DTMF analog telephone
- Loudspeaking / handset operation
- Memory buttons
- Built In Relay, max 5A
- External loudspeaker connection
- Weight 1.2 kgs
- Dimensions: 192x240x140 mm

5111	16715	Watertight telephone, wall mounted
------	-------	------------------------------------

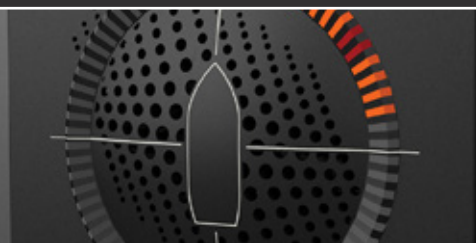


- Weight: 1.7 kgs
- Dimensions: 128x190x291 mm
- Protection: IP 65
- Strong call tone > 95db (A), 1m
- Solid steel handset cord

5111-H	16759	Watertight telephone, wall mounted
--------	-------	------------------------------------



- Weight: 1.7 kgs
- Dimensions: 128x190x291 mm
- Protection: IP 65
- Strong call tone > 95db (A), 1m
- Solid steel handset cord
- Headset input



TYPE ART NO. INTEGRATED COMMUNICATION SYSTEM
ICS 6200

6035	14774	Headset w/10 m cable & hook switch for 5111-H
6035	17147	Headset w/15 m cable & hook switch for 5111-H



- Weight: 0.8 kgs
- Noise cancelling microphone

5000	17568	Tel. Line Relay Unit
------	-------	----------------------



- Relay max 5A
- Weight: 0.3 kgs
- Dimensions: 130x100x52 mm
- IP-56

SVEA II	17684	Fixed Cellular Terminal for Maritime Applications
---------	-------	---

- Weight: 1.54 kgs
- Dimensions: 210x200x55 mm

AC2IM2	17943	Comrod GSM Antenna, 3Band for SVEA II
--------	-------	---------------------------------------

- Weight: 0.5 kgs
- Height: 0.55 m

RESISTEL	10782	EX Telephone Fernsig
----------	-------	----------------------



- Weight: 5.7 kgs
- Dimensions: 227x294x130 mm

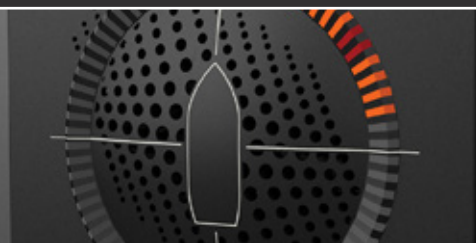
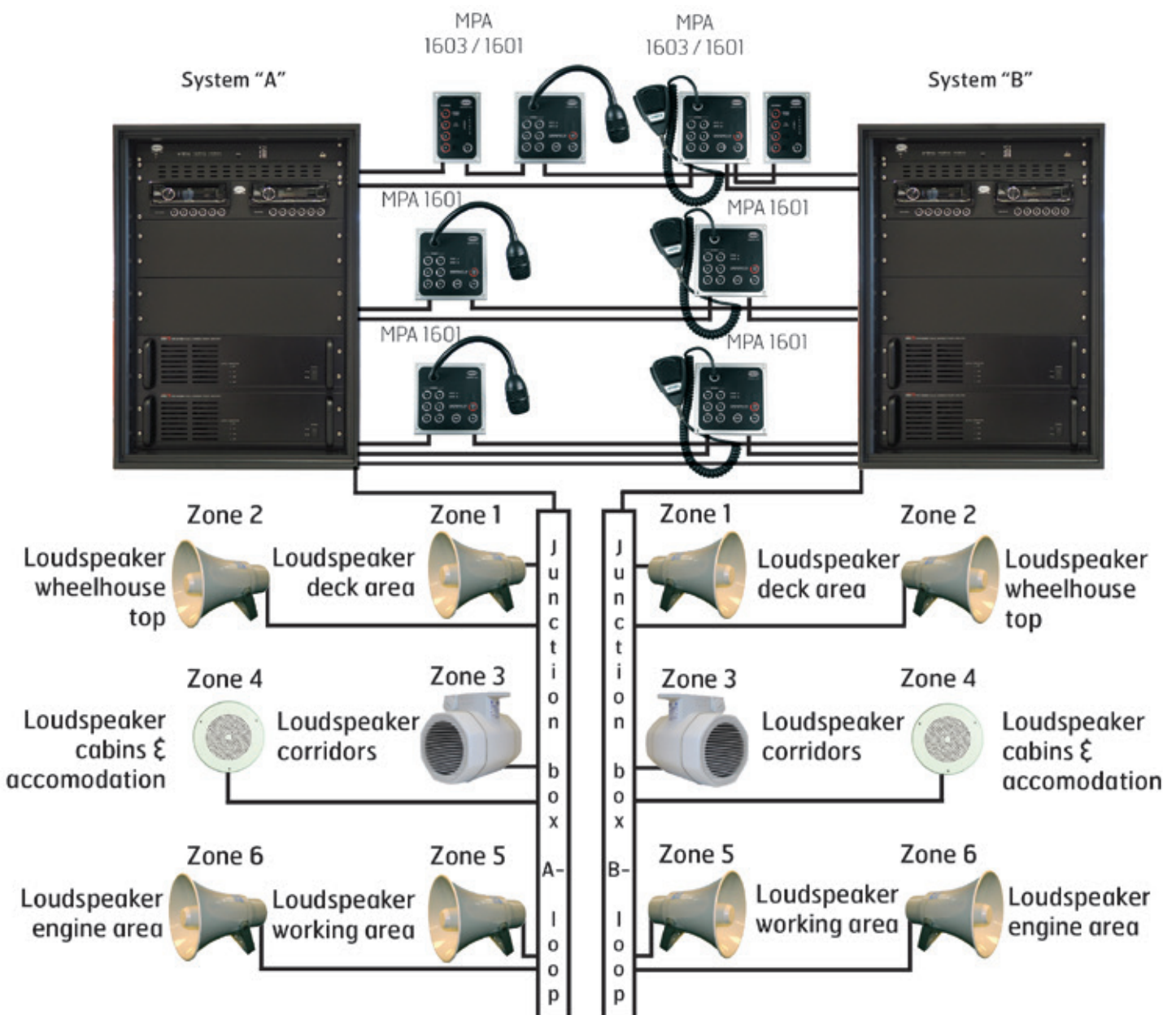


PUBLIC ADDRESS SYSTEM

Phontech Public Address and Alarm System - MPA 1600

The MPA 1600 system is a marine and offshore Public Address System, especially designed to meet the requirements for PA/GA and entertainment distribution onboard ships and

mobile offshore units. The system is in conformity to SOLAS, IMO and IEC regulations. Based on modular design and flexible configuration, the system covers a wide range of installation complexities from small single loop to fully duplicated systems utilizing total redundancy.



TYPE ART NO. PUBLIC ADDRESS SYSTEM
MPA 1600

Compact MPA



- Dimensions: 618 x585x470 mm
- Weight: 30 kgs + equipment
- IP 22
- Capacity 250W – 750 Output power
- Dual power supply: AC/DC or AC/AC

1671 19611 Amplifier



- Dimensions: 19" 1U
- Weight: 5.5 kgs
- Output power: 250W / 100V line
- Frequency response: 200Hz – 15kHz (3dB)
- Input sensitivity: 0dBu
- Power: 2 x 110/230VAC + 1x 24VDC
- Power dissipaton: 300W (max)

1600 16435 Central Unit



- 6 zones + All
- 2 entertainment input
- Pabx interface
- 6 user / microphone input (24 control units)
- Supply voltage: 24VDC
- Size: 19" 1U
- Weight: approx. 3.0 kgs

15629 Power Module for 1600, AC / DC

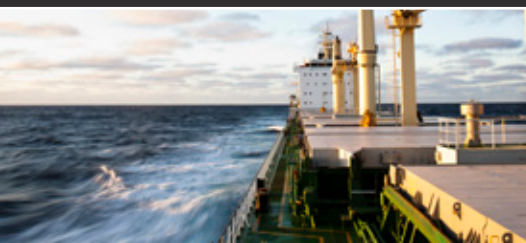


- Weight: 3 kgs
- Dimensions: 483x132x122 mm (19" 3HU)

18935MPA Cabinet / Table rack, 15HU



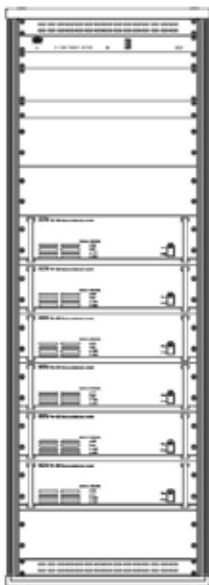
- Dimensions: 769x553x600 mm
- Weight: 75 kgs + equipment



TYPE	ART NO.	PUBLIC ADDRESS SYSTEM MPA 1600
------	---------	-----------------------------------

19837MPA

34U Phontech System Cabinet



- Dimensions: 1567x553x600 mm
- Weight: 75 kgs + equipment

18817

Amplifier 120W/100V, 230VAC/24VDC



- Size: 19" 3U
- Weight: 14 kgs

18840

Amplifier 240W/100V, 220VAC/24VDC



- Size: 19" 3U
- Weight: 19 kgs

18841

Amplifier 360W/100V, 220VAC/24VDC



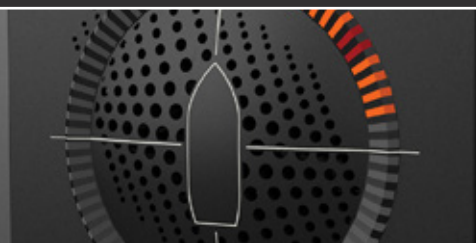
- Size: 19" 3U
- Weight: 21 kgs

18818

Amplifier 480W/100V, 220VAC/24VDC



- Size: 19" 3U
- Weight: 22 kgs



**TYPE ART NO. PUBLIC ADDRESS SYSTEM
MPA 1600**

1601 16818 Control unit, 6 zones + All w/gooseneck mic.



- Console mounted
- Also available with handmicrophone (p/n 16819)
- Weight: approx. 0.85 kgs
- Dimensions: 144x144x33 mm

1601b 16818 Control unit, 6 zones + All w/hand mic.



- Console mounted
- Also available with gooseneck microphone (p/n 16818)
- Weight: approx. 0.85 kgs
- Dimensions: 144x144x33 mm

1602a 16437 Entertainment module w/2 x Radio or CD



- Size: 19" 2U
- Weight: 5.7 kgs

EV-20R 16198 Message Storage Module

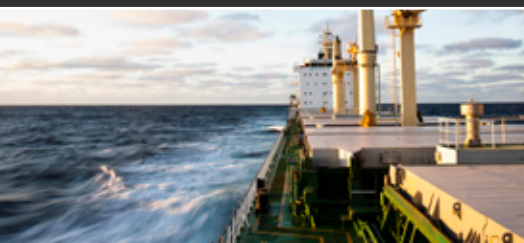


- 4 messages
- 19" Mounting
- Weight: 1.15 kgs

1603 16817 Alarm control panel



- 4 pushbuttons
- Console mounted
- Weight: approx. 0.40 kgs
- Dimension: 144x96x40 mm



TYPE	ART NO.	PUBLIC ADDRESS SYSTEM MPA 1600
------	---------	-----------------------------------

1663	17256	W.P. Mic. station w/ GA button for dual MPA system (Safe Area)
------	-------	--



- Wall mounted
- Weight : 2.30 kgs
- Dimensions: 200x160x140 mm

1808	17893	Paga Microphone Station
------	-------	-------------------------



- Wall mounted
- Weight: 2.50 kgs
- Dimensions: 160x160x90+70 mm

VC20R	19453	Local volume control w/override relay
-------	-------	---------------------------------------



- 100V line
- Max. 20W
- 24V DC Override relay
- Flush or wall mounted
- Weight: 0.3 kgs
- Dimensions: 80x80x63 mm (wall mounted)

VC60R	19454	Local volume control w/override relay
-------	-------	---------------------------------------

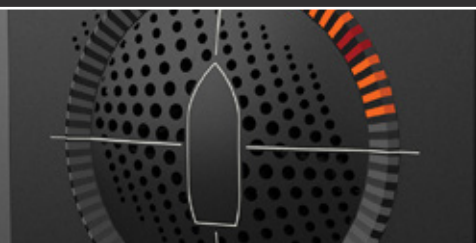


- 100V line
- Max. 60W
- 24V DC Override relay
- Flush or wall mounted
- Weight: 0.42 kgs
- Dimensions: 80x80x63 mm (wall mounted)

9000	17569	Relay Unit for ext. signal source, wall mounted
------	-------	---



- Weight: 0.3 kgs
- Dimensions: 130x100x52 mm
- IP-56



LOUDSPEAKERS



TYPE ART NO. LOUDSPEAKERS
W.T.HORNSPEAKERS

HP-6C 15023/16482 8W, 8/20 OHMS, IP67



- Weight: 0.5 kgs
- Dimensions: 98x85 mm

HP-10 10755/10756 10W, 8/20 OHMS, IP67

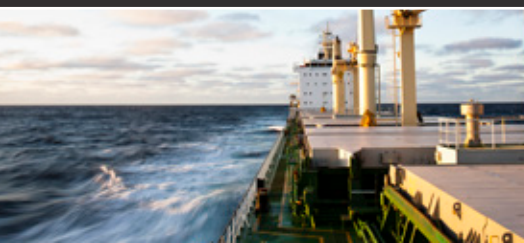


- Weight: 1.0 kgs
- Dimensions: 139x197 mm

HP-15 10758/10759 15W, 8/20 OHMS, IP67



- Weight: 1.4 kgs
- Dimensions: 200x250 mm



TYPE	ART NO.	LOUDSPEAKERS W.T.HORNSPEAKERS
------	---------	----------------------------------

HP-20	12234/12792	20W, 8/20 OHMS, IP 67
-------	-------------	-----------------------



- Weight: 1.9 kgs
- Dimensions: 237x286 mm

HP-30	13700/16479	30W, 8/20 OHMS, IP 67
-------	-------------	-----------------------



- Weight: 1.8 kgs
- Dimensions: 237x286 mm

HP-6CT	14076	6W, 100 V line, IP67
--------	-------	----------------------

HP-6-CTF	15280	6W, 100 V line, IP67 w/fuse
----------	-------	-----------------------------



- Weight: 0.8 kgs
- Dimensions: 96 x 118 mm

HP-10T	10757	10W, 100 V line, IP67
--------	-------	-----------------------

HP-10TF	14933	10W, 100V line, IP67 /fuse
---------	-------	----------------------------



- Weight: 1.3 kgs
- Dimensions: 193x197 mm

HP-15T	10760	15W, 100 V line, IP67
--------	-------	-----------------------

HP-15TF	15237	15W, 100 V line, IP67 /fuse
---------	-------	-----------------------------



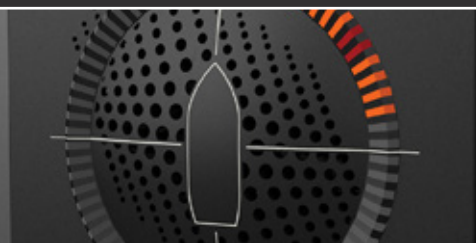
- Weight: 1.7 kgs
- Dimensions: 200x250 mm

HP-20T	13622	20W, 100 V line, IP67
--------	-------	-----------------------

HP-20TF	16317	20W, 100 V line, IP67 /fuse
---------	-------	-----------------------------



- Weight: 2.3 kgs
- Dimensions: 237x286 mm



**TYPE ART NO. LOUDSPEAKERS
W.T.HORNSPEAKERS**

HP-30T 13288 30W, 100 V line, IP67

HP-30TF 16318 30W, 100 V line IP67 /fuse



- Weight: 2.3 kgs
- Dimensions: 237x286 mm

DST100 13212 Driver Unit, Max. 100W for DH30/50



DH50 11935 100W, 100 V line, IP67



- Weight: 7.6 kgs w/driver unit
- Dimensions: 505x681 mm

CABINET SPEAKERS FOR WALL MOUNTING

CW-4 16485/11806 6W, 8/20 OHMS



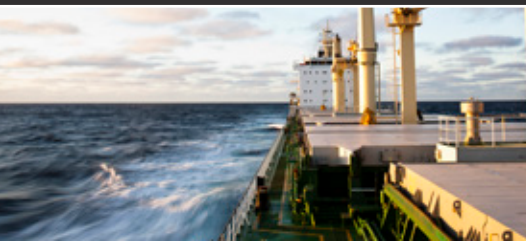
- Weight: 1.0 kgs
- Dimensions: 250x270x188 mm

CW-4T 12025 6W, 100 V line

CW-4TF 18980 6W, 100V line / fuse



- Weight: 1.2 kgs
- Dimensions: 250x270x188 mm



TYPE

ART NO.

CABINET SPEAKERS FOR WALL MOUNTING

SAFE-m6T 17363 6W, 100 V line, IP 55

SAFE-m6TF 18981 6W, 100V line, white / fuse



- Weight: 1.35 kgs
- Dimensions: 105x81.5x59 mm

SAFE-10PT 14969 10W, 100 V line, IP 44

SAFE-10PTF 16319 10W, 100 V line, IP 44 / fuse



- Weight: 0.8 kgs
- Dimensions: 206x104x55 mm

LOUDSPEAKERS FOR ALLEY

CP-66T 15428 6W, 100 V line

CP-66TF 17387 6W, 100 V line / fuse



- Weight: 0.77 kgs
- Dimensions: 270x149x67mm

BIVEP-6T 86829 6W, 100 V line, IP 44

BIVEP-6TF 18984 6W, 100 V line, IP 44 / fuse



- Weight: 0.94 kgs
- Dimensions: 167x115 mm

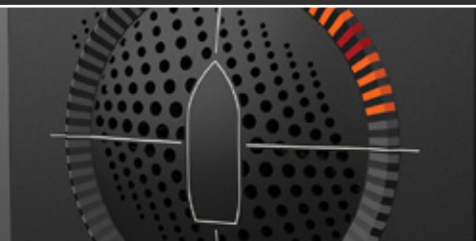
CEILING

HPS-6CT 17177 6W, 100 V line, IP 67

HPS-6CTF 17936 6W, 100 V line, IP 67 / fuse



- Weight: 0.88 kgs
- Dimensions: 121x132 mm



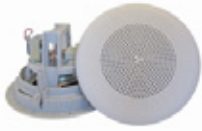
TYPE ART NO. LOUDSPEAKERS FOR CEILING

BF-560T 16235 6W, 100 V line



- Weight: 1.0 kgs
- Dimensions: 165x150 mm

BP-560TF 18985 6W, 100 V, line 5" / fuse



- Weight: 0.73 kgs
- Dimensions: 190x120 mm

BPF-560TF 18986 6 W, 100 V line, 5" IP 54 / fuse



- Weight: 0.9 kgs
- Dimensions: 190x120 mm

BPF-660TF 18254 6 W, 100 V line, 6" IP 54, Dome / fuse



- Weight: 1.3 kgs
- Dimensions: 237x133 mm

All 100 V Line speakers can be fitted with fuses, (except EX speakers)

**TYPE ART NO. LOUDSPEAKERS
EX APPROVED**

BA-56T 15746 6W, 100 V line, IP 54, Ex dem IIB + H2 T6



- Weight: 4.0 kgs
- Dimensions: 200x172 mm

CAREEX-6T 14535 6W, 100 V line, IP 54, Ex dem IIB + H2 T6

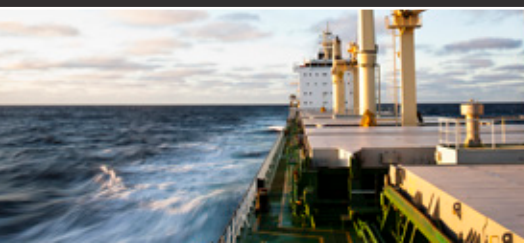


- Weight: 3.5 kgs
- Dimensions: 178x171x145 mm

CAREEX-36T 17293 6W, 100 V line, IP 54, Ex dem IIB + H2 T6



- Weight: 2.1 kgs
- Dimensions: 134x88x146 mm



TYPE	ART NO.	LOUDSPEAKERS EX APPROVED
------	---------	-----------------------------

DSP-15EExENT	16228	15W, 100 V line, IP 67, Ex dem IIB + H2 T6
--------------	-------	--

DSP15/25EExmNT	17465	25W, 100 V line, IP 67, Ex dem IIB + H2 T6
----------------	-------	--



- Weight: 2.2 kgs
- Dimensions: 144x207 mm

DSP-15EExmNTSL	17294	25W, 100 V line, IP 67, Ex dem IIB + H2 T6
----------------	-------	--



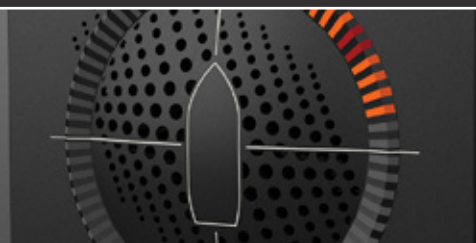
- Weight: 2.3 kgs
- Dimensions: 272x197x342 mm

DSP-25EExeNT	12761	25W, 100 V line, IP 67, Ex dem IIB + H2 T6
--------------	-------	--

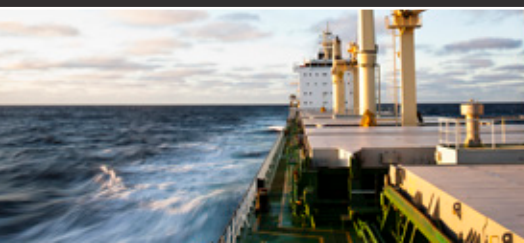


- Weight: 3.4 kgs
- Dimensions: 250x340 mm

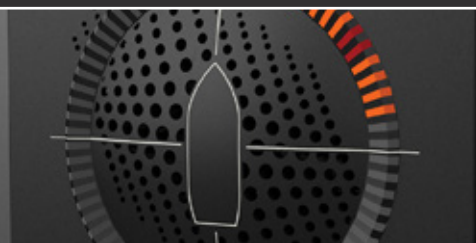
Other types of loudspeakers available on request.



SIGNAL EQUIPMENT



TYPE	ART NO.	SIGNAL EQUIPMENT
1009	11272	Alarm Horn
		<ul style="list-style-type: none"> • IP-56 • SPL: approx. 110dB / 1m • Supply voltage: 24VDC • Weight: 1.1 kgs • Dimensions: 139x139x197 mm
SON 1FW	13548	Electronic Sounder
		<ul style="list-style-type: none"> • IP-55 or IP-56 • SPL: 100dB / 1m • 10 diff. alarm tones selectable • Supply voltage: 24VDC • Weight: 0.2 kgs • Dimensions: 86x86x63 mm
56-23014300		Alarm Bell
		<ul style="list-style-type: none"> • IP-44 • SPL: 100dB / 1m • Supply voltage: 230VAC • Weight: 1.3 kgs • Dimensions: 154x180x91 mm
56-24 14717		Alarm Bell
		<ul style="list-style-type: none"> • IP-44 • SPL: 100dB / 1m • Supply voltage: 24VDC • Weight: 1.3 kgs • Dimensions: 154x180x91 mm
W828A/B		Flashlight
		<ul style="list-style-type: none"> • IP-65 • Flash energy: 5 Ws • Colour: Amber, blue, red, green • Supply voltage: 230 / 115VAC • Weight: 0.22 kgs • Dimensions: 100x100x138.5 mm
16231		Wall bracket for W828A
		<ul style="list-style-type: none"> • Weight: 0.05 kgs • Dimensions: 98x77x44 mm
R400		Rotating Light
		<ul style="list-style-type: none"> • IP-65 • Revolving speed: 120 RPM • Colour: Amber, blue, red, green • Supply voltage: 230 / 115VAC • Weight: 1.0 kgs • Dimensions: 205x150x150 mm



TYPE ART NO. SIGNAL EQUIPMENT

R401 Rotating Light



- IP-65
- Revolving speed: 160 RPM
- Colour: Amber, blue, red, green
- Supply voltage: 24VDC
- Weight: 1.0 kgs
- Dimensions: 205x150x150 mm

R300VB 14978 Wall Bracket for R400/401



- Weight: 0.65 kgs
- Dimensions: 250x150x150 mm

SON FL 101 Combined Sounder & Flashlight



- IP-66
- SPL: 100dB / 1m
- 10 diff. alarm tones selectable
- Colour: Amber, blue, red, green
- Joules: 5
- Supply voltage: 24VDC
- Weight: 0.35 kgs
- Dimensions: 174x111.5x83 mm

AL100-230/115 Combined Sounder & Flashlight

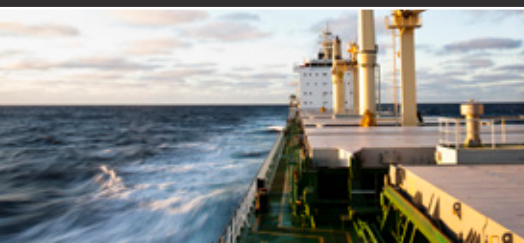


- IP-66
- SPL: 100dB / 1m
- 32 diff. alarm tones selectable
- Colour: Amber, blue, red, green
- Joules: 5
- Supply voltage: 230 / 115VAC
- Weight: 0.35 kgs
- Dimensions: 174x111.5x83 mm

TWINEX 14737 Combined EX - Sounder & Flashlight

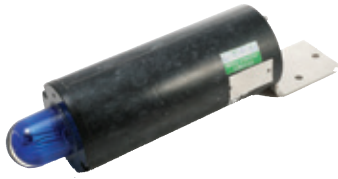


- Protection class: EEx II
- IP-66
- SPL: approx. 105dB / 1m
- 4 diff. alarm tones selectable
- Colour: Amber, blue, red, green
- Joules: 3
- Supply voltage: 230VAC
- Weight: 1.5 kgs
- Dimensions: 195x150x104 mm



TYPE	ART NO.	SIGNAL EQUIPMENT
------	---------	------------------

XB-9	15144	EX Flashlight
-------------	--------------	----------------------



- Protection class: EEx II
- IP-66
- Colour: Amber,Blue,Red,Green
- Joules: 5
- Supply voltage: 24VDC
- Weight: 1.6 kgs
- Dimensions: 270x81x81 mm

BExS110D	15986	EX Sounder
-----------------	--------------	-------------------

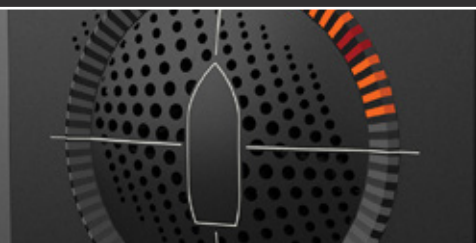


- Protection class: EEx de IIC T4
- IP-67
- SPL: approx. 110dB / 1m
- 32 diff. alarm tones selectable
- Supply voltage: 24VDC
- Weight: 3.2 kgs
- Dimensions: 181x155x263 mm

KTV 75/400	14715	Typhone and Solenoid valve, EX
-------------------	--------------	---------------------------------------



- IP-65
- SPL: approx. 136dB / 1m
- Supply voltage: 230VAC
- Weight: approx. 1.5 kgs
- Dimensions: 125x125x375 mm

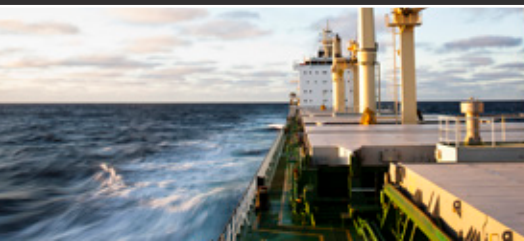
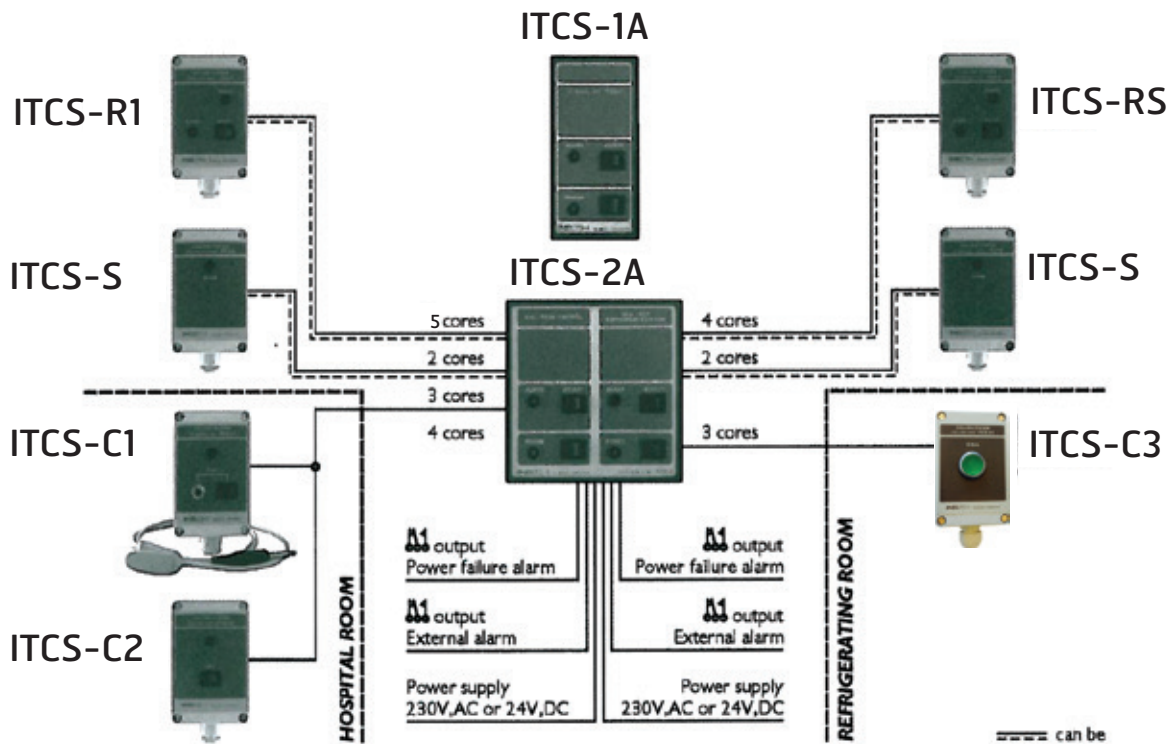


HOSPITAL & REFRIGERATOR ALARM SYSTEM

INELTEH Hospital and Refrigerator Call System ITCS

The ITCS system is designed for using onboard ships for calling from hospital and refrigerating rooms. It can be delivered as "Call from Hospital", "Call from Refrigerating

Room" or "Call from Hospital and Refrigerating Room" System is realised using units ITCS-1A (single) or ITCS-2A (double) and arbitrarily numbers or peripheral units like ITCS-C1, ITCS-C2 or ITCS-C3. Can be fully equipped with signalling unit type ITCS-S and reset unit type ITCS-RS.



TYPE

ART NO.

HOSPITAL & REFRIGERATOR ALARM SYSTEM

ITCS-1A

18411

Control unit for single call indication, flush mounted, 24 VDC



- Weight: 0.35 kgs
- Dimensions: 72x144x86 mm

ITCS-1A

18932

Control unit for single call indication, flush mounted, 230 VAC

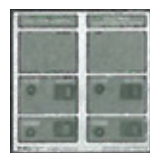


- Weight: 0.95 kgs
- Dimensions: 72x144x86 mm

ITCS-2A

18412

Control unit for double call indication, flush mounted, 24 VDC

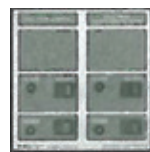


- Weight: 0.65 kgs
- Dimensions: 144x144x86 mm

ITCS-2A

18931

Control unit for double call indication, flush mounted, 230 VAC



- Weight: 1.86 kgs
- Dimensions: 144x144x86 mm

ITCS-R1

18462

Repeater unit w/light & buzzer, wall m.



- Weight: 0.25 kgs
- Dimensions: 80x155x58 mm

ITCS-C1

16468

Hospital Call Unit w/cable push button, wall mounted



- Weight: 0.35 kgs
- Dimensions: 80x125x58 mm

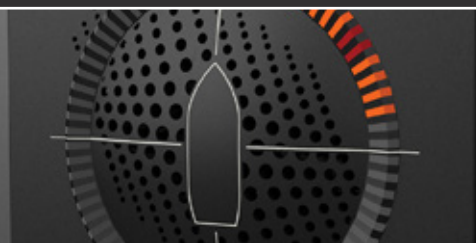
ITCS-C2

16469

General Call Unit, wall mounted



- Weight: 0.2 kgs
- Dimensions: 80x125x58 mm



TYPE ART NO. HOSPITAL & REFRIGERATOR ALARM SYSTEM

ITCS-C3 16470 Refrigerator Unit w/ill. Pushbutton, IP 56, wall mounted



- Weight: 0.25 kgs
- Dimensions: 80x125x58 mm

ITCS-S 16471 Additional Signal Unit w/buzzer and led, wall mounted

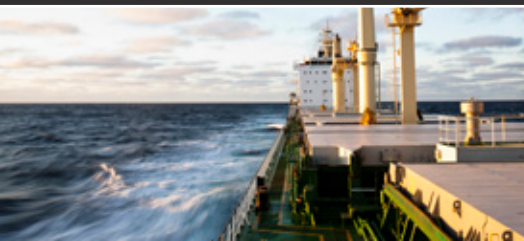


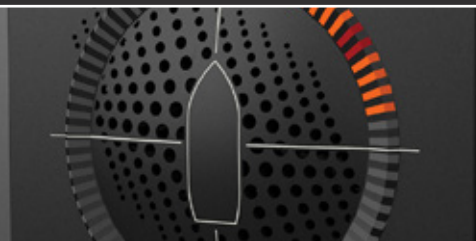
- Weight: 0.24 kgs
- Dimensions: 80x125x58 mm

ITCS-RS 18413 Reset Unit



- Weight: 0.24 kgs
- Dimensions: 80x125x58 mm







Official distributor Zenitel - Phontech products for the Netherlands
more info: www.tttbv.com or info@tttbv.com